

ANIMAL RIDDLES

Inference Task Cards

PAULA ROSANA ASAD
English Language Teacher and Mindulf Educator

About this Resource

Are you teaching animals to your ESL students? If so, this is exactly what you need! Your students will have fun using the clues to figure out what the animal is. These 28 task cards are great for revising vocabulary and animal descriptions. I also added a blank sheet for students to create their own riddles.

Instructions

Students will read the clues on the card and match the description with the correct animal picture.

How can you use these Animals Riddles?

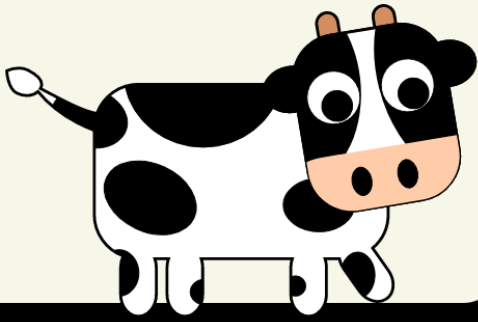
- As an enrichment activity
- For fast finishers
- As independent or whole group practice
- To extend learning
- As literacy centres

Who is this for?

Elementary ESL learners

Animals Included: cow, dog, cat, sheep, pig, rabbit, mouse, hen, horse, crocodile, snake, zebra, elephant, butterfly, cheetah, bat, penguin, bear, lion, whale, frog, dolphin, monkey, kangaroo, camel, owl, octopus, hippo.

COW



It is a big farm animal.
It has got horns. It
loves grass. It is black
and white. It gives
milk.

DOG



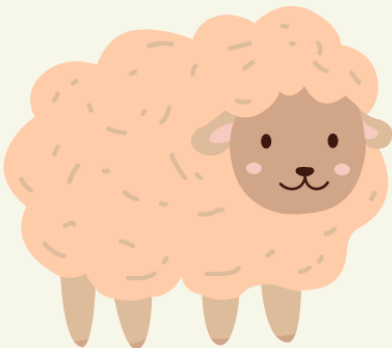
It is a farm animal or a
pet. It likes bones. It
can bark. It is man's
best friend.

CAT



It is a farm animal or a
pet. It can climb trees.
It doesn't like dogs. It
loves milk.

SHEEP



It can be brown, black
or white. It likes grass.
It gives wool.

PIG



It is a farm animal. It is pink and fat. It has got short legs. It lives in a sty. It loves eating.

RABBIT



It is a small farm animal. It is grey, brown or white. It has got long ears. It likes carrots. It can hop.

MOUSE



It is small and fast. It is grey. It can run fast. It loves cheese. It doesn't like cats.

HEN



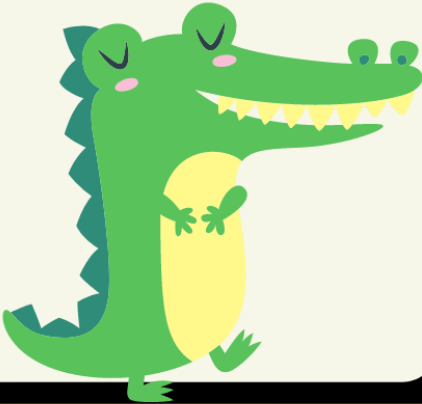
It's a small farm animal. It lays eggs. Its babies are chicks.

HORSE



It's a big farm animal.
It likes grass and hay.
It can run very fast.
You can ride it.

CROCODILE



This animal is green
and long. It has got
sharp teeth.

SNAKE



This animal is long,
thin and hasn't got
legs. It can be
dangerous!

ZEBRA



This animal is black
and white. It has got
stripes.

ELEPHANT



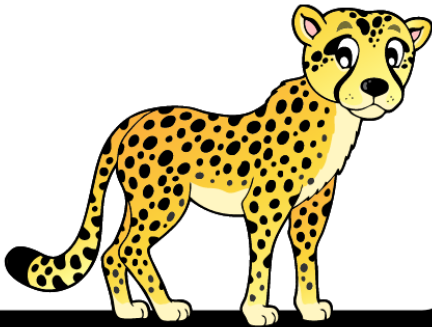
This animal is too big to be your pet. It has got a long trunk and a four legs.

BUTTERFLY



This animal has got wings but it is not a bird. It lives in gardens, fields and forests.

CHEETAH



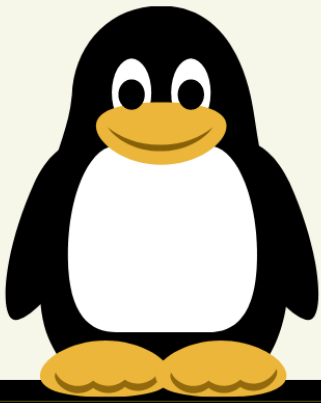
It is spotty and speedy. It looks like a leopard.

BAT



This animal lives upside down. It has got eyes but it can't see.

PENGUIN



This animal wears a tuxedo in the snow and skate on its tummy across the ice.

BEAR



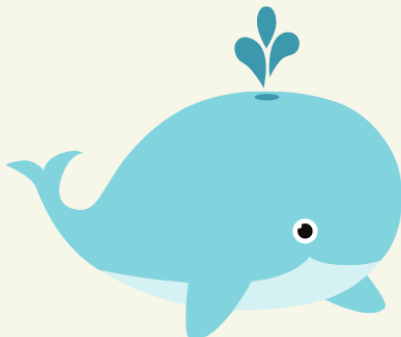
It lives in the woods. It is very big and furry. It likes fish and berries.

LION



It is the king of the jungle. It is big and has got a mane.

WHALE



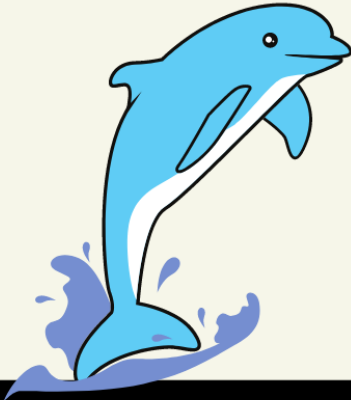
It has got a hole in its back. It hasn't got legs. It is a big mammal.

FROG



This animal can be green. It can jump and eat insects.

DOLPHIN



This animal is friendly and intelligent. It can jump and swim in the water.

MONKEY



This animal is funny. It can climb trees. It likes bananas!

KANGAROO



This animal lives in Australia. It is big and brown. It can jump.

CAMEL



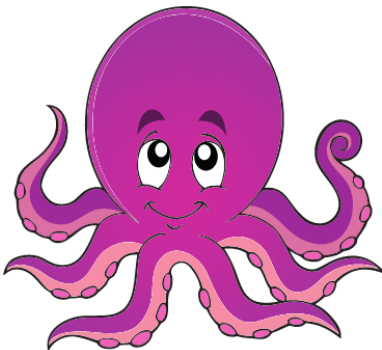
This animal lives in the desert. It can go for many days without water.

OWL



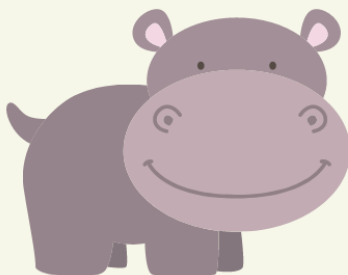
This animal is a nocturnal bird. It has got big eyes. It can rotate its neck 270 degrees!

OCTOPUS



This animal is very intelligent and lives in the sea. It has got long arms.

HIPPO



This animal is a very big mammal. It can swim very well. It is a herbivore.

—
—
—
—
—

— — — — —
— — — — —
— — — — —
— — — — —

—
—
—
—
—

— — — — —
— — — — —
— — — — —
— — — — —

—
—
—
—
—

— — — — —
— — — — —
— — — — —
— — — — —

—
—
—
—
—

— — — — —
— — — — —
— — — — —
— — — — —



Thanks

for downloading my products!

Please, remember to leave feedback to earn TPT credits which can be used toward future purchases. If you have any comment concerning this product please send me an email to theresourcefulenglishteacher@gmail.com

To get more resources and project ideas please visit my store and website:

<https://www.teacherspayteachers.com/Store/The-Resourceful-English-Teacher>

www.theresourcefulenglishteacher.com

Be part of my community!



resourcefulenglishteacher



theresourcefulenglishteacher

